



501 St. Jude Place
Memphis, TN 38105

Nonprofit Org.
U.S.. POSTAGE
PAID
St. Jude Children's
Research Hospital



In 2018, Hammermill helped bring patient artwork to life by featuring it on select reams of Hammermill products.



A VERY SPECIAL Thank You

TO OUR FRIENDS AT
HAMMERMILL® PAPER

International Paper, through its Hammermill brand, is committed to the lifesaving work of St. Jude. In addition to donating all paper used for our gift catalogs, they generously donated more than \$250,000 in 2018 to help fund our fight against childhood cancer and other life-threatening diseases.



Meet
Bella!
read her story
on page 15

ST. JUDE GIFTSHOP
**SPRING
COLLECTION**
2019



Spring has sprung! Celebrate the season with perfect gifts for your loved ones.

Shake off the final chill of winter with the heartwarming stories of our St. Jude patients. Their stories of inspiration, hope and survival drive everything we do. Because of you and your generosity, families never receive a bill from St. Jude for treatment, travel, housing or food—because all a family should worry about is helping their child live.



St. Jude patient
Bailey
sickle cell disease

B. LOVE BUTTERFLY RUFFLE HEMMED SHIRT

\$16

60% cotton/40% polyester.
Toddler sizes: 3T, 4T, 5/6, 6X.

Item # **7703ORG**



St. Jude patient
Bella
brain cancer

B

A. FLORAL WREATH ONESIE

\$15

100% cotton. Navy onesie with
white picot edging. Reinforced
3-snap bottom closure.
Sizes: NB, 6M, 12M, 18M, 24M.

Item # **8002NVY**



Visit us
online at
**STJUDE.ORG/
SPRINGGIFTS**
for more
gifts

C. DINOSAUR ONESIE

\$15

60% cotton/40% polyester. Blue
and grey onesie with reinforced
3-snap bottom closure.
Sizes: NB, 6M, 12M, 18M, 24M.

Item # **8001BLU**



St. Jude patient
Miguel
eye cancer

C

A. SHOOT FOR THE STARS T-SHIRT

\$16

100% cotton. This comfy blue tee features a white shoulder stripe. Youth sizes: XS-XL.

Item # **7903BLU**

B. SMILES CAN CHANGE COLD SHOULDER T-SHIRT

\$16

60% cotton/40% polyester. This cute shirt features cold shoulders, split sides and a message to make you smile. Toddler sizes: 3T, 4T, 5/6, 6X.

Item # **7701GRN**



Darsh, brother of St. Jude patient **Bella**



St. Jude patient **Emily**
brain cancer



St. Jude patient **Axel**
kidney cancer

C. RETRO VARSITY T-SHIRT

\$16

60% cotton/40% polyester. Boost your pride for St. Jude with this colorful retro varsity-style tee. Toddler sizes: 2T, 3T, 4T, 5/6. Youth sizes: XS-XL.

Item # **7902PUR**



St. Jude patient **Emma**
brain cancer

D. ST. JUDE LOGO RAGLAN T-SHIRT

\$16

60% cotton/40% polyester. Both sporty and stylish, this raglan tee proudly displays the iconic St. Jude child logo. Toddler sizes: 3T, 4T, 5/6, 6X. Youth sizes: SM-XL.

Item # **7702RED**



St. Jude patient **Cameron**
brain cancer

E. ST. JUDE ROCKS T-SHIRT

\$12

100% cotton. This tee is plugged in and ready to rock in support of the St. Jude mission. Toddler sizes: 2T, 3T, 4T, 5/6. Youth sizes: XS-XL.

Item # **7901RED**



A. MELISSA & DOUG® SEE AND SPELL GAME

\$24

Make learning fun while developing sight-reading vocabulary and fine motor skills. Comes with wooden storage case and 50+ wooden letters. Ages 4+. Dimensions: 13.9"H x 9.2"W x 1.75"L.

Item # 4901



**ORDER
ONLINE**
[stjude.org/
springgifts](http://stjude.org/springgifts)

MEET OLIVIA

During a family vacation, Olivia was sleepy and ran a low fever. Less than a month later, a doctor visit changed everything. "Your entire world can be shattered in the few minutes it takes for a blood test to be run," recalled her mom. Olivia has acute lymphoblastic leukemia, but thanks to St. Jude, its survival rate has increased from 4 percent when St. Jude opened to 94 percent today. "Her nurses have all commented on how well she handles everything, always sitting still for them to do whatever they need to do," said her mom. "She is the perfect daughter and the best sister, and if you ask her, she isn't sick."



B



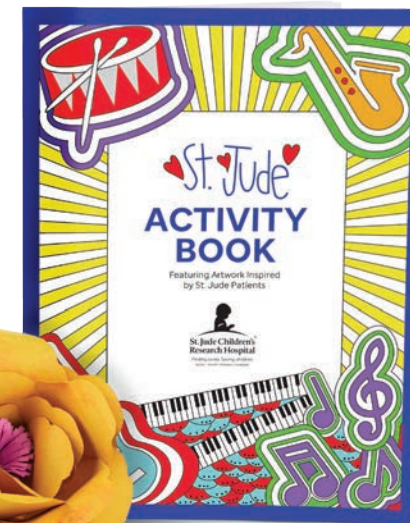
SIDE VIEW

B. "OLIVIA" ELEPHANT PLUSH

\$18

This adorable and soft elephant is inspired by courageous St. Jude patient Olivia. Ages 1+. Surface-washable. 10"H.

Item # 2138



C



C. PATIENT ART-INSPIRED ACTIVITY BOOK

\$5

A 16-page collection of coloring pages, mazes, word finds and more. This activity book is inspired by St. Jude patient art. Dimensions: 8"W x 10.5"H.

Item # 1101



A

B



C

**A. REASON TO SMILE
WOOD BOX SIGN**

\$6

Create a positive atmosphere in your home with this sign. Wood. Dimensions: 5"W x 2.5"H x 1"D.

Item # **4502**

B. MUFFIN CANDLE

\$10

Fill your home with the scent of sun-ripened strawberries. 60 hour burn time. Dimensions: 3.75"W x 3.5"H.

Item # **2502**

**C. BLESS YOU TISSUE
BOX COVER**

\$18

Share the sweet, hand-lettered sentiments of "Bless You" with this standard sized, square wooden tissue box. Dimensions: 5.25"W x 5.25"H x 5.63"D.

Item # **4504**



D

**D. BLESSINGS FRAMED
LETTER BOARD**

\$30

Take stock of life's many blessings with this framed letter board which includes 144 pieces of white plastic letters, numbers, symbols and punctuation. Dimensions: 14"W x 14"H x 1"D.

Item # **4505**

E



F



E. OMBRE WATER BOTTLE

\$22

Ombre colored 17 oz. water bottle. Double wall stainless steel with vacuum keeps drinks hot for 12 hours and cold for 48 hours.

Item # **2009PUR**

F. LOVE NEVER FAILS MUG

\$16

Keep inspiration close with this microwave and dishwasher safe mug. Holds 18 oz. Includes pom pom and wooden gift tag.

Item # **2011**

MEET AXEL

When Axel's mom noticed swelling on his left side, she thought her active boy had hurt himself playing. But an ultrasound showed Axel had a tumor. Referred immediately to St. Jude, he started treatment for kidney cancer the very next morning—but his cancer had already spread. He required surgery to remove his left kidney, then radiation and chemotherapy. After six months, Axel completed treatment and is now cancer-free. Families never receive a bill from St. Jude for anything, and this is, his mom said, "a great help, because I know treatment is very expensive. If St. Jude did not exist, we would not have been able to pay for treatment."

St. Jude patient
Axel and
his mother

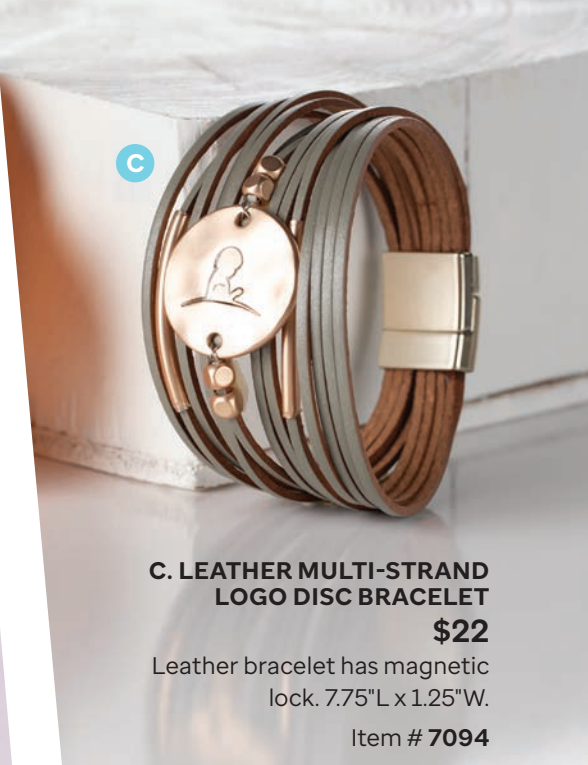




A. GOLD TRIANGLE NECKLACE
\$15
 Gold triangle charm with St. Jude logo charm. 18" with 2" extender.
 Item # 7077



B. DISC EARRING STUDS
\$25
 German silver post earrings are engraved with the St. Jude logo. Size: ½" diameter.
 Item # 7069



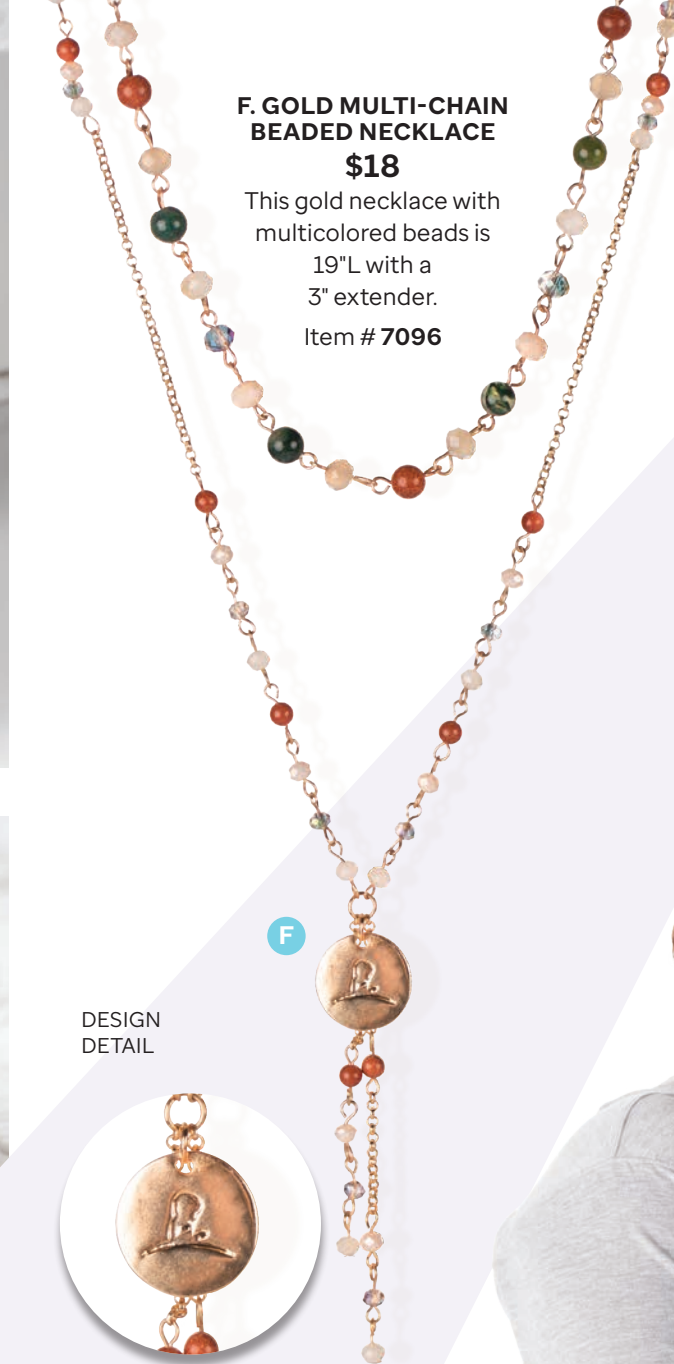
C. LEATHER MULTI-STRAND LOGO DISC BRACELET
\$22
 Leather bracelet has magnetic lock. 7.75"L x 1.25"W.
 Item # 7094



D. SILVER MULTI-STRAND BRACELET
\$18
 Multi-strand silver bracelet includes St. Jude logo charm. 7.5"L with 1" extender.
 Item # 7078



E. LAVENDER AGATE BEADED WRAP BRACELET
\$16
 Amethyst color agate beads and an antique silver finish make this a timeless choice. One size fits most.
 Item # 7095



F. GOLD MULTI-CHAIN BEADED NECKLACE
\$18
 This gold necklace with multicolored beads is 19"L with a 3" extender.
 Item # 7096

DESIGN
 DETAIL



MEET BAILEY and her family

Bailey is a bubbly 17 month old who loves music and loves to dance. Although her parents knew there was a chance their children would have sickle cell disease, Bailey's older brother was born healthy. Bailey, however, was diagnosed with the blood disorder shortly after birth. She was referred to St. Jude right away. "With the research, they are learning more about these diseases all the time," said Bailey's mom. "Most people think St. Jude is a cancer hospital, but they treat all kinds of diseases, including blood disorders. Until you really see it and are immersed in the St. Jude world, you don't know the extent of what they do."

St. Jude patient
Bailey and her
 grandmother and
 mother



GIVE A GIFT

of donation

St. Jude won't stop until no child dies from cancer. Your donation could help provide vital treatments, life-enriching amenities or fun events for the kids of St. Jude, like Axel.



St. Jude patient
Axel
kidney cancer

ALSAC is the fundraising and awareness organization for St. Jude Children's Research Hospital ("St. Jude"). ALSAC is an Illinois nonprofit, tax-exempt organization which exists solely to raise and provide the funds necessary to operate and maintain St. Jude whose mission is to find cures for children with cancer and other life-threatening diseases through research and treatment. **American Lebanese Syrian Associated Charities, Inc.**

(ALSAC) is located at 501 St. Jude Place, Memphis, TN 38105. For questions, Donor Services can be reached at 1-800-822-6344.

We honor our donors' right to change their communication preferences at any time. If you would like to make any changes, please write to us, call us at 1-800-606-3079, or e-mail us at DonorChoice@stjude.org. To ensure the privacy of our friends and supporters, St. Jude does not sell, lease, rent or loan any personally identifiable information to anyone not acting on our behalf. However, we do share this data with service providers that have agreed to adhere to our privacy policy.

Since this mailing may reach both U.S. and Canadian residents, please review the following information for your residence:

For U.S. Residents: 100% of your donation may be eligible for a tax deduction as allowed by law. For questions about financial information or about ALSAC's purpose, programs and activities, call Donor Services at 1-800-822-6344, visit www.stjude.org, or write to ALSAC, or for residents of the following states, as stated below. **California:** ALSAC's audited financial statement is available upon request to ALSAC. **Florida:** A COPY OF THE OFFICIAL REGISTRATION AND FINANCIAL INFORMATION MAY BE OBTAINED FROM THE DIVISION OF CONSUMER SERVICES BY CALLING TOLL-FREE WITHIN THE STATE, 1-800-435-7352, OR AT WWW.FLORIDACONSUMERHELP.COM. REGISTRATION DOES NOT IMPLY ENDORSEMENT, APPROVAL, OR RECOMMENDATION BY THE STATE. ALSAC's REGISTRATION NUMBER IS CH-431. **Georgia:** Upon request, ALSAC will provide a full and fair description of this and its other programs, and a financial statement or summary. **Maryland:** A copy of the current financial statement for American Lebanese Syrian Associated Charities, Inc. is available by sending the request to 501 St. Jude Place, Memphis, TN 38105 or calling 800-822-6344. Documents and information submitted under the Maryland Solicitations Act are also available, for the cost of postage and copies, from the Maryland Secretary of State, State House, Annapolis, MD 21401, (410)974-5534. **Michigan:** MICS No. 3799. **Mississippi:** The official registration and financial information of American Lebanese Syrian Associated Charities, Inc. may be obtained from the Mississippi Secretary of State's office by

calling 1-888-236-6167. Registration by the Secretary of State does not imply endorsement by the Secretary of State. **New Jersey:** INFORMATION FILED WITH THE ATTORNEY GENERAL CONCERNING THIS CHARITABLE SOLICITATION AND THE PERCENTAGE OF CONTRIBUTIONS RECEIVED BY THE CHARITY DURING THE LAST REPORTING PERIOD THAT WERE DEDICATED TO THE CHARITABLE PURPOSE MAY BE OBTAINED FROM THE ATTORNEY GENERAL OF THE STATE OF NEW JERSEY BY CALLING (973) 504-6215 AND IS AVAILABLE ON THE INTERNET AT <http://www.state.nj.us/ps/ca/charfrm.htm>. REGISTRATION WITH THE ATTORNEY GENERAL DOES NOT IMPLY ENDORSEMENT. **New York:** A copy of ALSAC's last financial report filed with the Attorney General is available by sending the request to ALSAC at 501 St. Jude Place, Memphis, TN 38105 or the Attorney General Charities Bureau, Department of State, 120 Broadway, 3rd Floor, New York, NY 10271. **North Carolina:** Financial information about this organization and a copy of its license are available from the State Solicitation Licensing Branch at (888) 830-4989 or 919-807-2214. The license is not an endorsement by the state.

Pennsylvania: The official registration and financial information of American Lebanese Syrian Associated Charities, Inc. may be obtained from the Pennsylvania Department of State by calling toll-free within Pennsylvania, 800-732-0999. Registration does not imply endorsement. **Virginia:** Upon request, a financial statement is available from the State Office of Consumer Affairs in the Department of Agriculture and Consumer Services, 102 Governor Street, Richmond, VA 23219. **Washington:** The registration required by the Charitable Solicitation Act is on file with the Secretary of State's office. You may obtain financial disclosure information by contacting the Secretary of State at 800-332-4483 or www.sos.wa.gov. **West Virginia:** West Virginia residents may obtain a summary of the registration and financial documents from the Secretary of State, State Capitol, Charleston, WV 25305. Registration does not imply endorsement. **Wisconsin:** A financial statement of the charitable organization disclosing assets, liabilities, fund balances, revenue, and expenses for the preceding fiscal year will be provided to any person upon request. REGISTRATION IN A STATE DOES NOT IMPLY ENDORSEMENT, APPROVAL, OR RECOMMENDATION OF ALSAC BY THE STATE.

For Canadian Residents: The organization is not a Canadian registered charity at this time and donations do not qualify for Canadian tax recognition. The privacy policy for Canadian residents can be found at stjude.org/canada/privacy.

how to order

Visit us online at **STJUDE.ORG/SPRINGGIFTS** or call **800-746-1539** to view additional Gifts of Donation.



	MINIMUM DONATION	ITEM NUMBER
	HELP BUY TOYS FOR HOSPITAL AREAS	\$25 1914
	SHARE OF VIDEO GAMES FOR TEEN ROOMS	\$75 1903
	SCHOOL WORKBOOKS	\$75 1920
	REHABILITATION WEIGHTS	\$25 1911
	SHARE OF PLATELET TRANSFUSION	\$50 1912
	SHARE OF ONE DAY OF OXYGEN	\$75 1913
	NO MORE CHEMO PARTY	\$25 1907
	SHARE OF HOLIDAY PARTY	\$50 1908
	SHARE OF SPECIAL EVENTS	\$75 1909



**A. BLACK AND CREAM COLOR
BLOCK LEATHER TOTE**

\$84

Sleek and stylish 100% leather tote is perfect for those on the go. Perfect for laptop, tablet or files.

Dimensions: 12"H x 10.75"W x 4"D.

Item # **6506**

A

Don't forget!
**MOTHER'S
DAY**
is May 12.

B

B. CHEVRON TOTE

\$40

Inside zippered pocket and padded laptop pocket. Dimensions: 15.5"H x 20"W x 5"D. 20" handles.

Item # **6505**

**C. A LITTLE SPARKLE
COSMETIC BAG**

\$10

White leather cosmetic bag adorned with a black tassel and metallic gold zipper. Dimensions: 9"W x 6"H.

Item # **6502**

C

**D. FAUX LEATHER TASSEL
PURSE CHARM**

\$15

Teal faux leather accessory charm. Silvertone accents and St. Jude charm. 5.5"L

Item # **7075**

D

DESIGN
DETAIL



E

**E. BROOKS BROTHERS®
SILK TIES**

\$32

Spring colors and the St. Jude logo make these 100% Italian silk ties perfect for any dressy occasion. Regular length is 58". Width is 3.25". Dry clean only.

Red Tie:
Item # **5904RED**

Gold Tie:
Item # **5905GLD**

Blue/Grey Tie:
Item # **5903BLU**

MEET BELLA and her brother

At the hospital in Mumbai, the news was grim. Thirteen-month-old Bella's brain tumor was cancerous and incurable.

Her parents had never been to the United States or heard of St. Jude. But soon, based on additional pathology from St. Jude and another hospital in India, Bella's diagnosis was changed to anaplastic ependymoma—a survivable disease, if treated properly. A month after being told Bella would die,

her family arrived at St. Jude, where she received proton therapy and chemotherapy. They were prepared to sacrifice everything to get her help. Instead, they found St. Jude would provide much more than Bella's treatment. Said her father, "Accommodation, transportation—everything is arranged.

Unless someone comes here and experiences it, no one will believe that there could be such an organization in the world."

St. Jude patient
Bella and
her brother





A

A. FLORAL WREATH T-SHIRT

\$22

This comfy and fun floral design tee is 100% cotton. Unisex Sizes: SM-2XL.

Item # **8312BLU**



B

B. ST. JUDE REPEAT RINGER T-SHIRT

\$22

Contrast collar and sleeve binding give a little retro fun to your wardrobe. 52% cotton/48% polyester. Unisex Sizes: SM-2XL.

Item # **8314BLU**



C

See website for size charts.



D



DESIGN
DETAIL



E

C. UNISEX DANNY SUCCESS T-SHIRT

\$22

Inspire everyone around you with this 100% cotton shirt displaying a classic quote from St. Jude Founder, Danny Thomas. Unisex Sizes: SM-2XL.

Item # **9023BLU**

D. ST. JUDE FLORAL RELAXED-FIT TANK

\$26

Make your winter blues a thing of the past with this relaxed, flowing floral tank.

50% cotton/50% viscose.

Ladies Sizes: SM-2XL.

Item # **8313COR**

E. OMBRE ST. JUDE LOGO TANK

\$26

This yellow ombre tank is light and soft and exudes the whimsy feel of spring. 95% rayon/5% spandex.

Ladies Sizes: SM-2XL.

Item # **8311YEL**



Families never receive a bill from St. Jude for treatment, travel, housing or food—because all a family should worry about is helping their child live.

See website for size charts.

A



B



A. LADIES 'WE WON'T STOP' PERFORMANCE T-SHIRT

\$24

Performance, moisture-wicking tee. 95% polyester/5% spandex. Ladies Sizes: SM-2XL.

Item # 8315GRY

B. UNISEX 'WE WON'T STOP' PERFORMANCE T-SHIRT

\$24

Performance, moisture-wicking tee. 95% polyester/5% spandex. Unisex Sizes: SM-2XL.

Item # 9022GRY

C. UNISEX 'THIS SHIRT FIGHTS CHILDHOOD CANCER' T-SHIRT

\$22

Make it known you are supporting the fight to end childhood cancer. 100% cotton. Unisex Sizes: SM-2XL.

Item # 9021BLU



C



Don't forget!
FATHER'S DAY
is June 16.

D



D. ADIDAS® HORIZONTAL COLORBLOCK GOLF SHIRT

\$55

Performance, moisture-wicking collared shirt. 95%polyester/5% elastane. Unisex Sizes: SM-2XL.

Item # 9019MLT

E



E. UNISEX DISTRESSED SCRIPT T-SHIRT

\$22

Classic and vintage-worn, this 100% cotton tee lets everyone know "There's no place like St. Jude". Unisex Sizes: SM-2XL.

Item # 9020RED

Fashions for the season modeled by St. Jude parents and supporters.